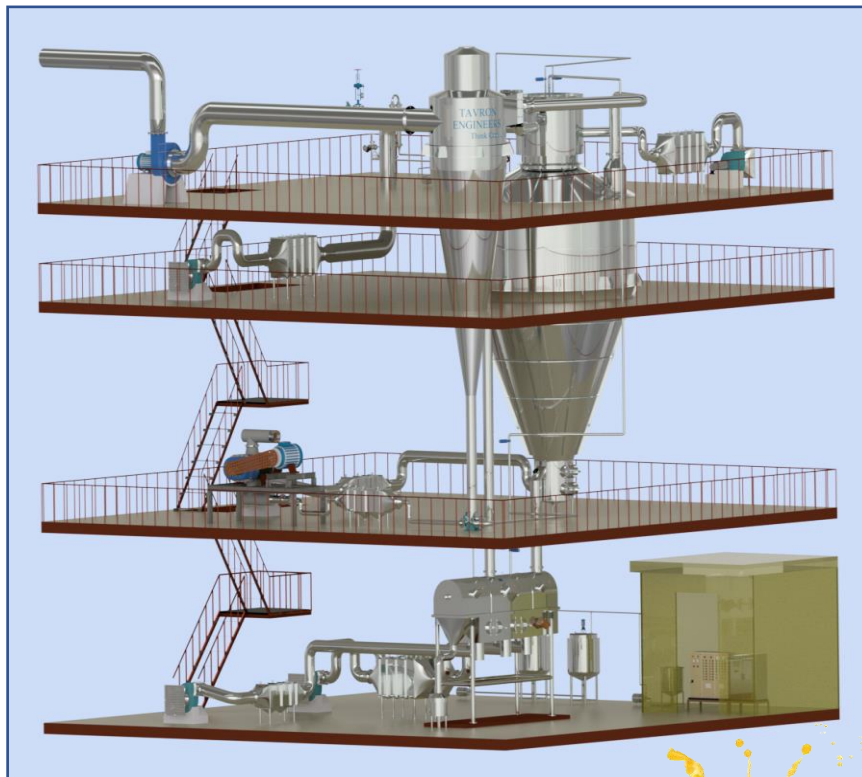
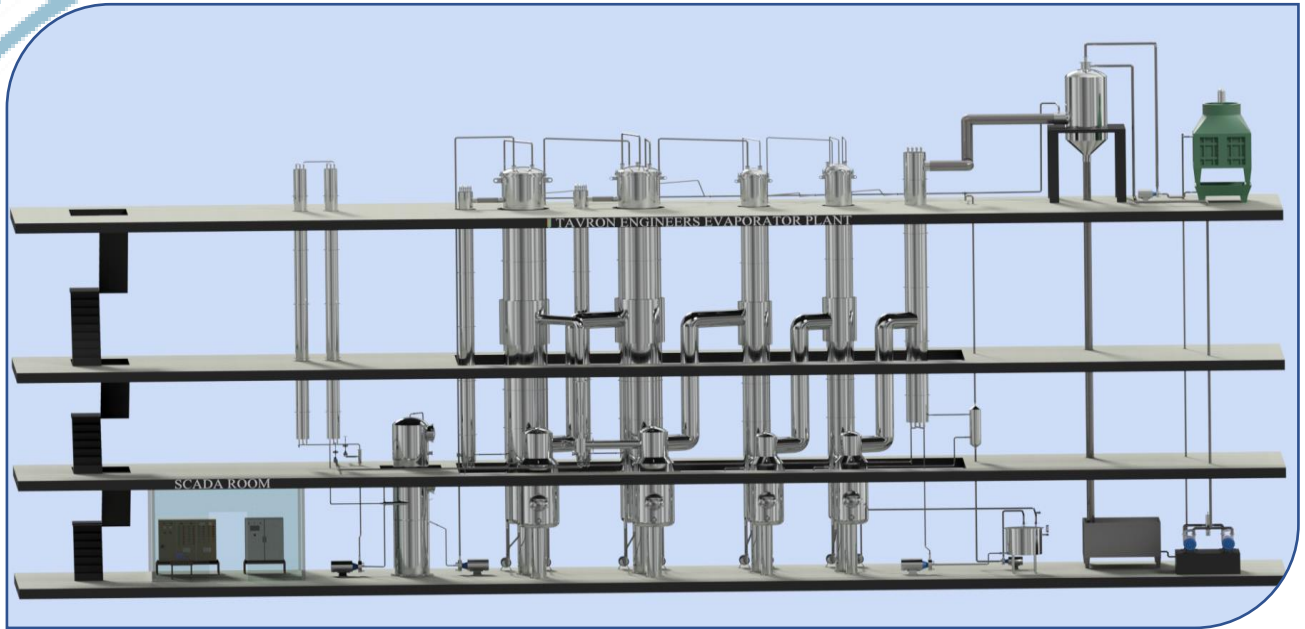


MILK POWDER PLANT



TAVRON
Engineers

...Think cool



CALANDRIA

- Tubes are of A 319 or ASTM A 249.
- Shell will be of SS 304 / SS 316 / Carbon steel.
- Finished to Hygienic standard.
- Designed to achieve uniform wetting.



EVAPORATOR ACCESSORIES

- Pre heaters are of straight tubes.
- Pre heaters are designed to use the vapour of calandria for heating the inlet product.
- Excellent designed Vapour separator to avoid carry over.



MULTI-PASS CALANDRIA

- The Calandria has been designed with Single pass and multi pass.
- The calandria for the food industry with the multi pass to avoid contamination.



TRIPLE EFFECT EVAPORATOR IN ASSEMBLY

- Multi Effect and the steam consumption is to optimum.
- TVR or MVR as optional.
- Construction with SS 304/ SS 316.



MULTIPLE EFFECT EVAPORATOR

- Falling film Evaporator.
- Raising Film Evaporator.
- Force Circulation Evaporator.
- Combination of falling film and force circulation Evaporator.



INSTRUMENT AND CONTROLS

- Instrument to give the signal to the field mounted valves.
- Field mounted proportionate control valves to maintain the temperature and pressure.

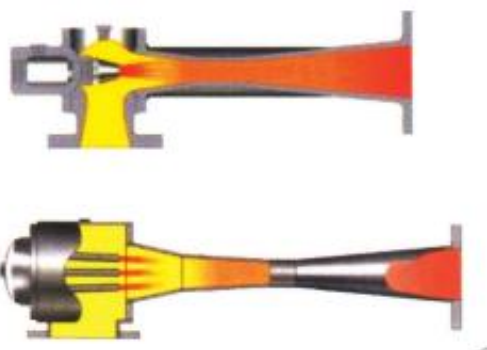
STRUCTURAL MOUNTED EVAPORATOR

- Structural mounted Evaporator for the Industrial Application.
- Evaporator to concentrate the RO projects.
- Main Evaporator of SS 304 / SS 316.



THERMAL VAPOUR RE-COMPRESSOR

- TVR with Multi Nozzle.
- TVR with Single Nozzle.
- Material of Construction SS 304 / SS 316 / Carbon Steel.
- Suction and Discharge of various connection to suit the operational condition.



SPRAY DRYER

- Capacity from 5 Kg / Hr Water Evaporation to 1500 Kg / Hr Water Evaporation.
- Available with Rotary Atomizer, Nozzle and two fluid system.
- Material of construction SS 304 / SS 316.
- Second stage drying with Vibro fluid Bed Dryer.
- Three Stage Drying with Stationery Fluid Bed and vibro fluid bed.
- Available with the hot air producing system of steam, Direct or Indirect oil fired, Thermic fluid etc.
- Closed Loop Dryer is available on request for special application



EFFICIENT CYCLONE SYSTEM

- Single / Multi Cyclone.
- For Efficient separation conveying air and product.
- Made out of SS 304 / SS 316 / Carbon steel.
- Additional Wet Scrubber and Bag filters are available to meet the local pollution standard.



VIBRO FLUID BED

- Material of construction SS 304 / SS 316.
- Well designed Coni form hole bed sheet
- Supported on spring loaded SS / MS legs.
- Easy removal for the Inspection of the product.



TAVRON
Engineers

...Think cool

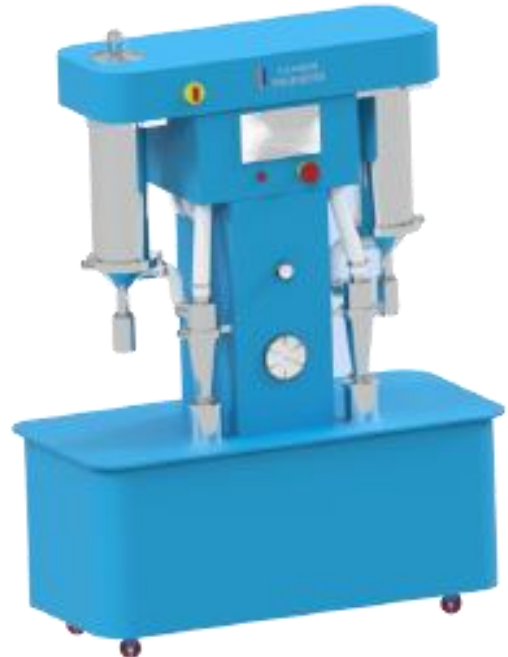
LAB MODEL SPRAY DRYER

- Capacity from 2 to 25 Kg / Hr Water Evaporation.
- Highly suitable for R&D and Education institution.
- Heating with Electrical Heater with other heating on option.
- Complete Auto control.
- Available with PLC control.



TABLE TOP SPRAY DRYER

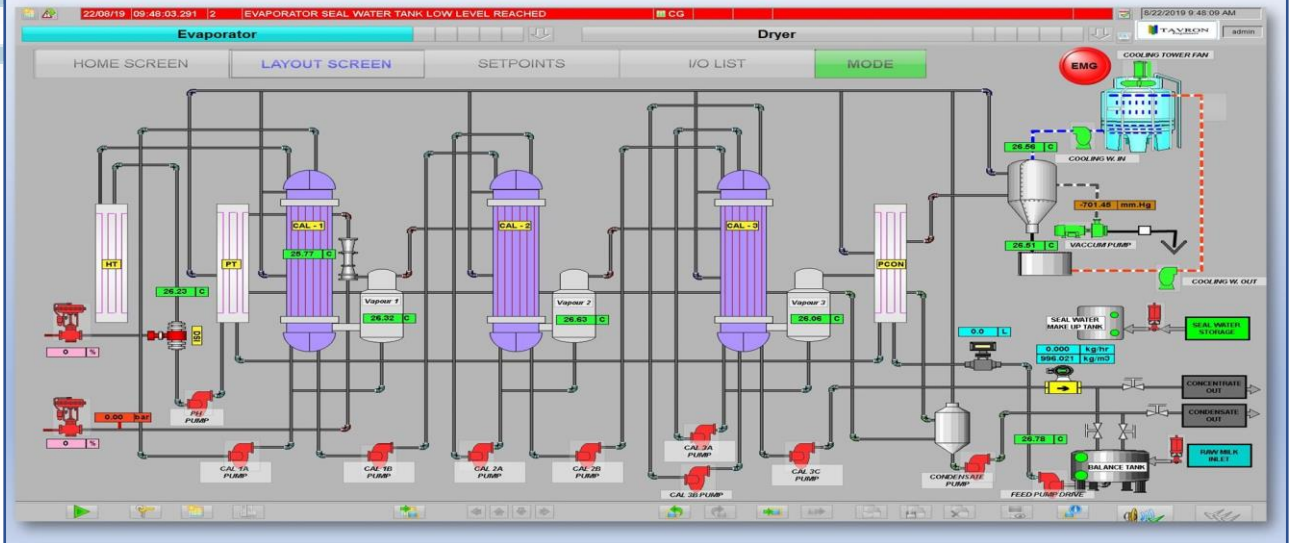
- Material of construction SS 304 / SS 316
- Capacity From 2to25kg/Hr
- Nozzle (American Make)
- Available With PLC Control



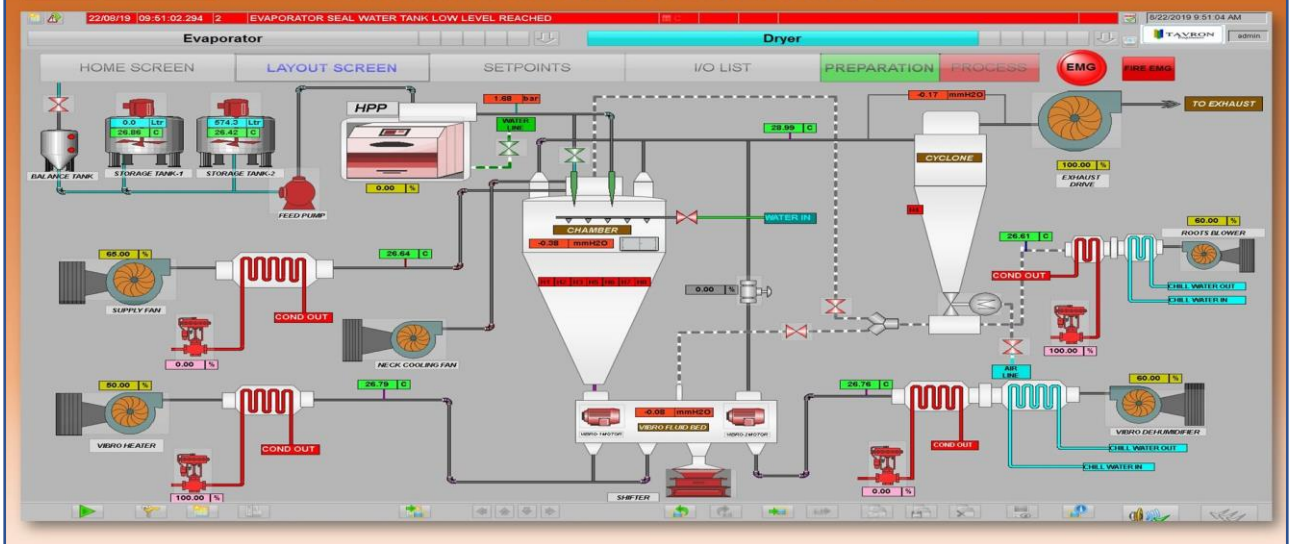
TAVRON
Engineers

...Think cool

FALLING FILM EVAPORATOR SCADA



SPRAY DRYER SCADA SCREEN



HEAD OFFICE TAVRON ENGINEERS

AF-1 Aiswariyam, 25 A Redhills Road, Kolathur,
Chennai - 600 099, India.
Tel:- +91 44 25567211. Mobile : +91 9444015442.
Email:- sales@tavron.net| Website: www.tavron.net

FACTORY TAVRON ENGINEERS

38-42 Arulmurugan Nagar, Vichoor Post,
Manali New Town, Chennai - 600 103.
Tel: +91 9176610727. Email: factory@tavron.net